

TABLE 1: BE-89XC CAMERA ONLY OPTIONS

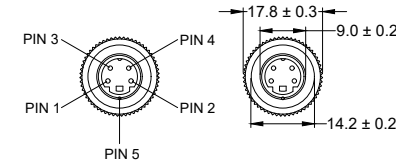
PART NO.	MODEL NO.	DESCRIPTION	FIRMWARE VER.
3288D	BE-890C-C	CAMERA, ELITE, HEATED, ULTRA-LOW-LIGHT, PAL, NO AUDIO, CAMERA ONLY	MA-A10CP_XXX_MP_REV1.1(190522)
5427	BE-891C-C	CAMERA, ELITE, HEATED, ULTRA-LOW-LIGHT, NTSC, NO AUDIO, CAMERA ONLY	MA-A10CN_XXX_MP_REV1.1(190522)

Revision Notes

R1 - ADDED FIRMWARE VERSION TO TABLE 1 AND NOTES AS PER ECR CR-A681

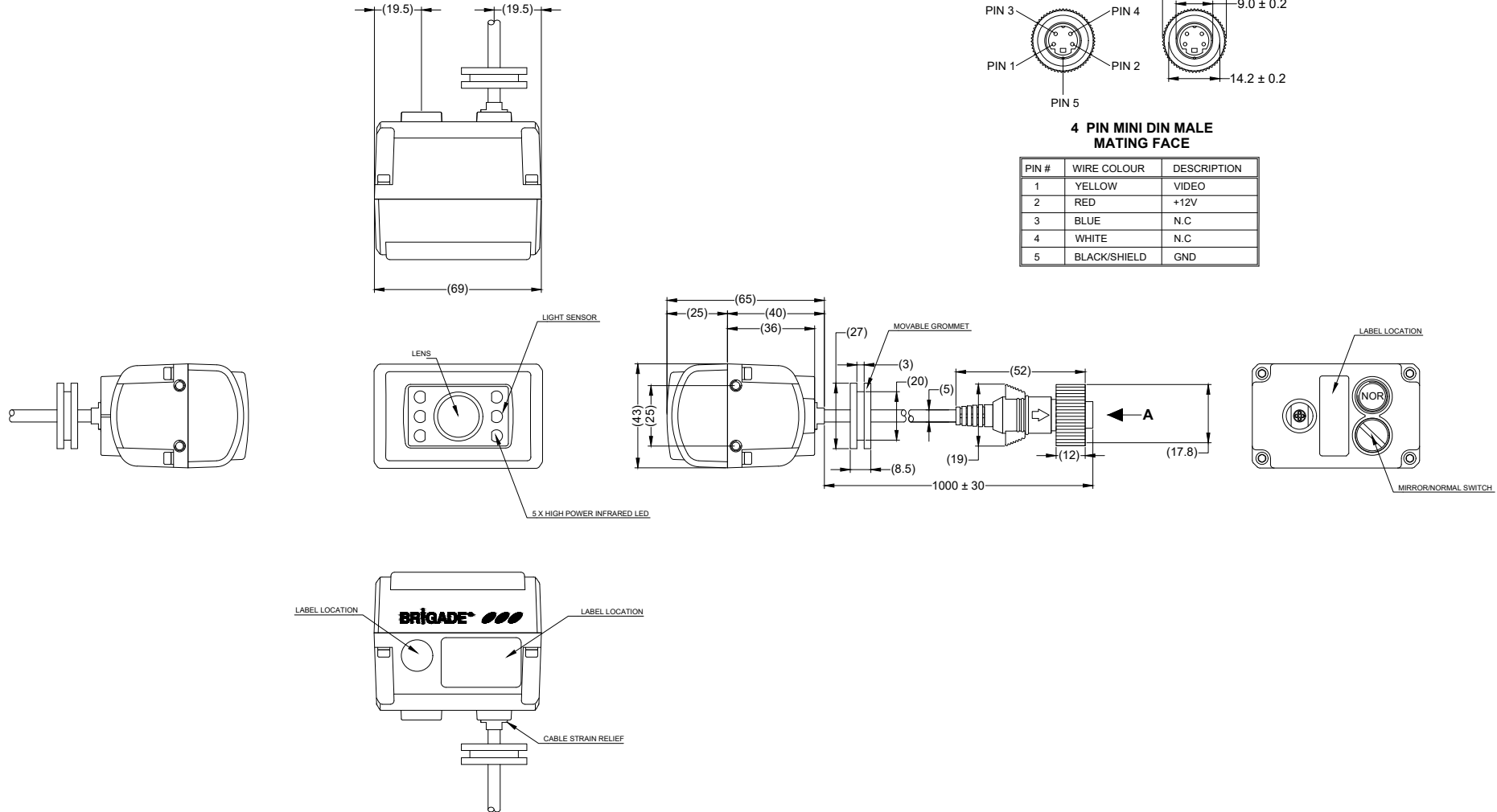
APA: T.CHOI | Drawn:S.LAVER | Checked:L.PILLAY | Approved:D.WALLIN | Date: 25/06/19

VIEW A



4 PIN MINI DIN MALE MATING FACE

PIN #	WIRE COLOUR	DESCRIPTION
1	YELLOW	VIDEO
2	RED	+12V
3	BLUE	N.C
4	WHITE	N.C
5	BLACK/SHIELD	GND



- NOTES:
- REFER TO PRODUCT SPECIFICATION FOR MORE DETAILS.
 - FOR PRODUCT LABEL AND PACKAGING INFORMATION REFER TO MASTER BOM
 - ANY CUSTOMER MODIFICATION OF THIS PRODUCT CAUSING SUBSEQUENT FAILURE IS NOT A LIABILITY OF BRIGADE ELECTRONICS PLC.
 - REFER TO TABLE 1 FOR FACTORY INSTALLED FIRMWARE VERSIONS.

PROPRIETARY NOTICE
 THIS DESIGN AND TECHNICAL INFORMATION APPEARING ON THIS DRAWING IS THE PROPERTY OF BRIGADE ELECTRONICS, AND IS DISCLOSED IN CONFIDENCE. IT IS NOT TO BE COPIED, REPRODUCED, REVEALED TO OR EXPROPRIATED BY OTHERS, EITHER IN WHOLE OR IN PART WITHOUT THE EXPRESS WRITTEN CONSENT OF BRIGADE ELECTRONICS.



Assembly Pl Approval T.CHOI 03/05/18	Approved by B.JOHN	Checked by W.BEAZLEY	Drawn by S.LAVER
Angle of Projection 	Units mm	Scale N/A	Released 04/05/18
Status RELEASED	Assembly Ref BE-89XC-C		
Part No SEE TABLE 1	BE-003784-01-18		